


Eclipse Cultural Connections

July 12, 2017

Host: Brooks Mitchell, STAR_Net Education Coordinator

Presenter: Isabel Hawkins, Astronomer and Educator with the Exploratorium



Audio problems? Click and highlight the  button at the top of your screen. You can also click “Meeting” > “Audio Setup Wizard”. You will not need microphone capabilities.

Reminders

- “Safe Eclipse Viewing” webinar with Doug Duncan, Director of the Fiske Planetarium, on **August 2nd** at 1:00 p.m. (MT)
 - Register now!
- “Out-of-This-World Activities”, **September 13th**
 - Join STAR_Net and the Lunar and Planetary Institute to learn tips and tricks from LPI’s Explore program for engaging children, tweens, and families in space science with games, activities, and events.
 - Registration will open in early August
- Certificate of Attendance via SurveyMonkey Link
- Haven’t gotten your glasses yet? Be patient – they are on their way!

Isabel Hawkins



- Astronomer and educator with a PhD in astronomy from UCLA
- Spent 20 years as a researcher and science educator at the University of California, Berkeley, Space Sciences Laboratory
- Joined the Exploratorium staff in 2009
- Has published more than 100 articles on a variety of astronomy and education topics
- Recipient of the 2009 Astronomical Society of the Pacific's Klumpke-Roberts award for her work in astronomy education and public outreach
- Interests include salsa dancing, yoga, drawing Maya classic period glyphs, and the study of native languages

WHAT TO EXPECT DURING A TOTAL SOLAR ECLIPSE



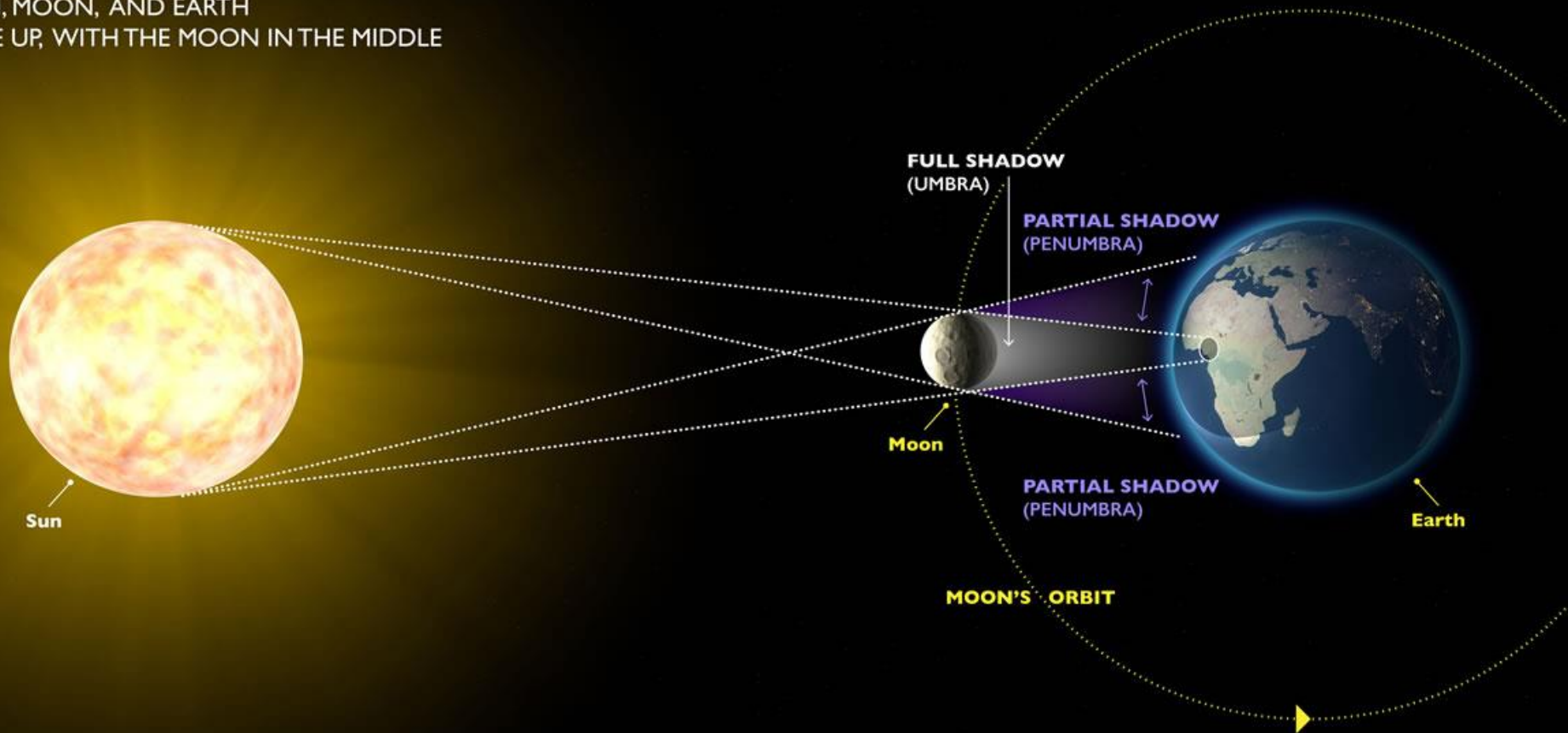
Dr. Isabel Hawkins
Astronomer and Project Director
Exploratorium
July 12, 2017

- **The Great American Eclipse of August 21, 2017**
 - Why do solar eclipses happen?
 - View the total eclipse
 - “Location, Location, Location”
 - Live webcasts (English and Spanish)
 - View the partial eclipse
 - Eye safety
- Experiencing a total solar eclipse
 - What to look for during a total solar eclipse
- Cultural Examples of Solar Astronomy
- NASA feature – Parker Solar Probe (Solar Probe Plus)
- Q&A

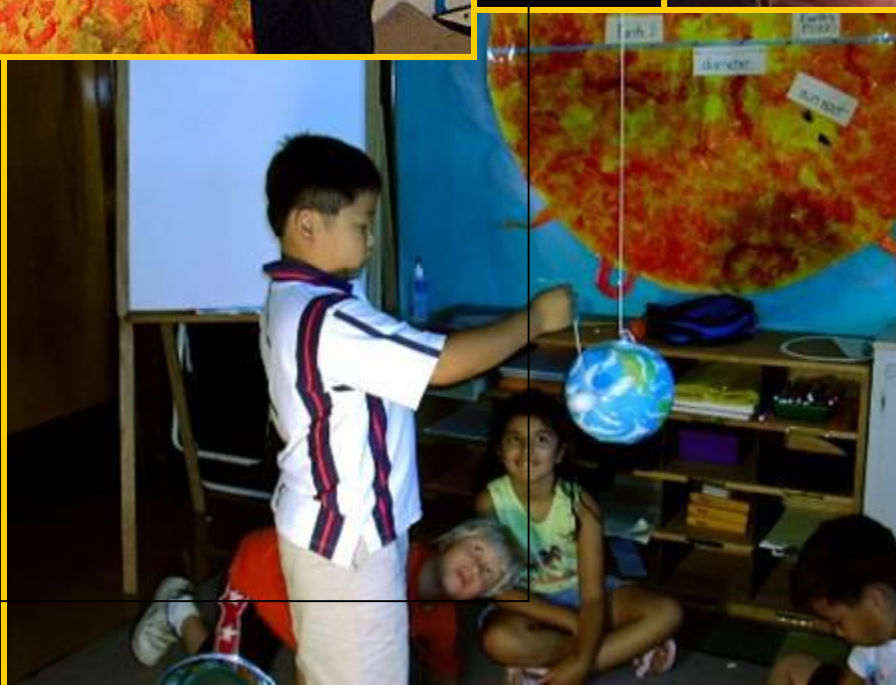
Why do solar eclipses happen?

SOLAR ECLIPSE

SUN, MOON, AND EARTH
LINE UP, WITH THE MOON IN THE MIDDLE





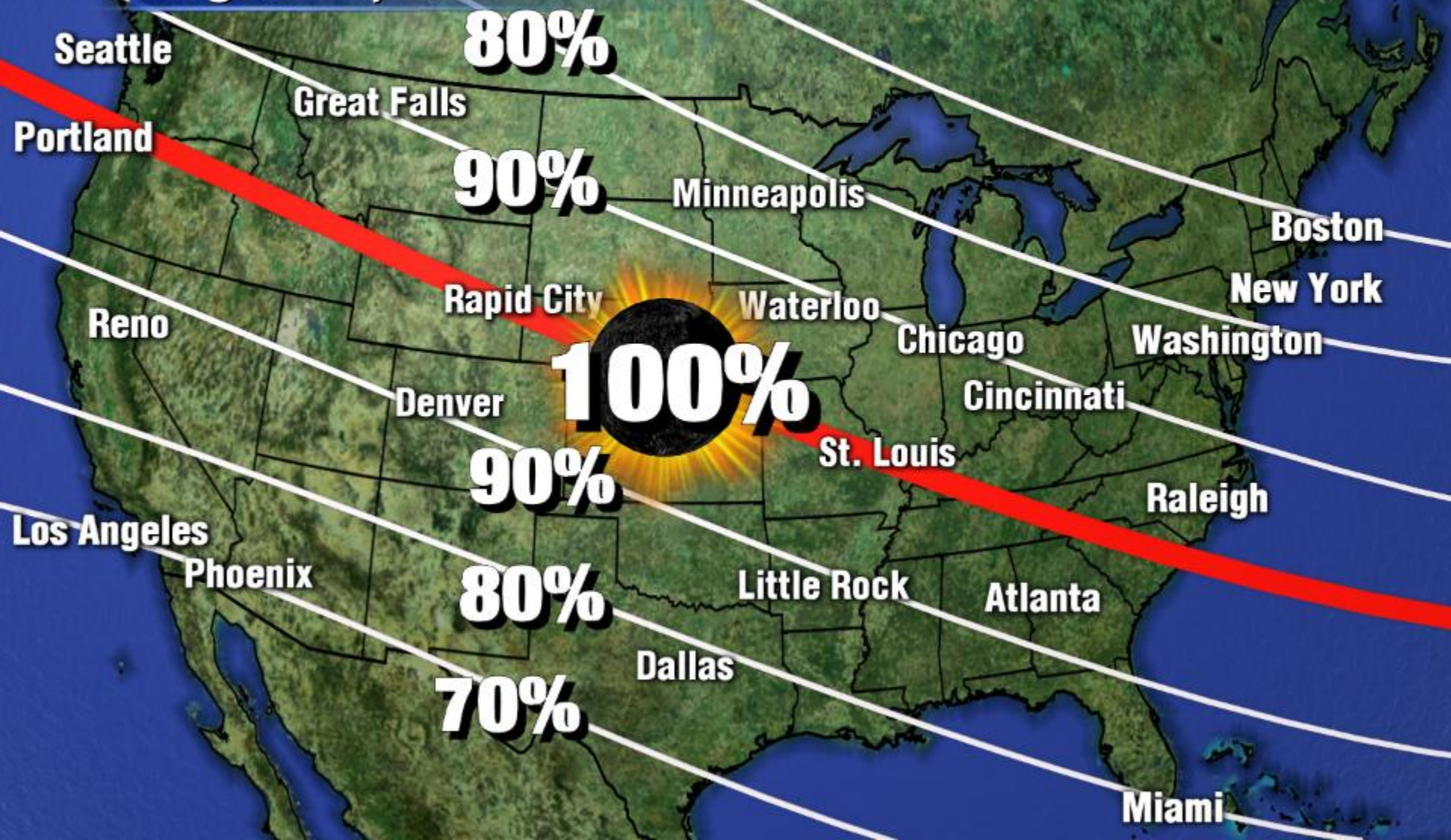






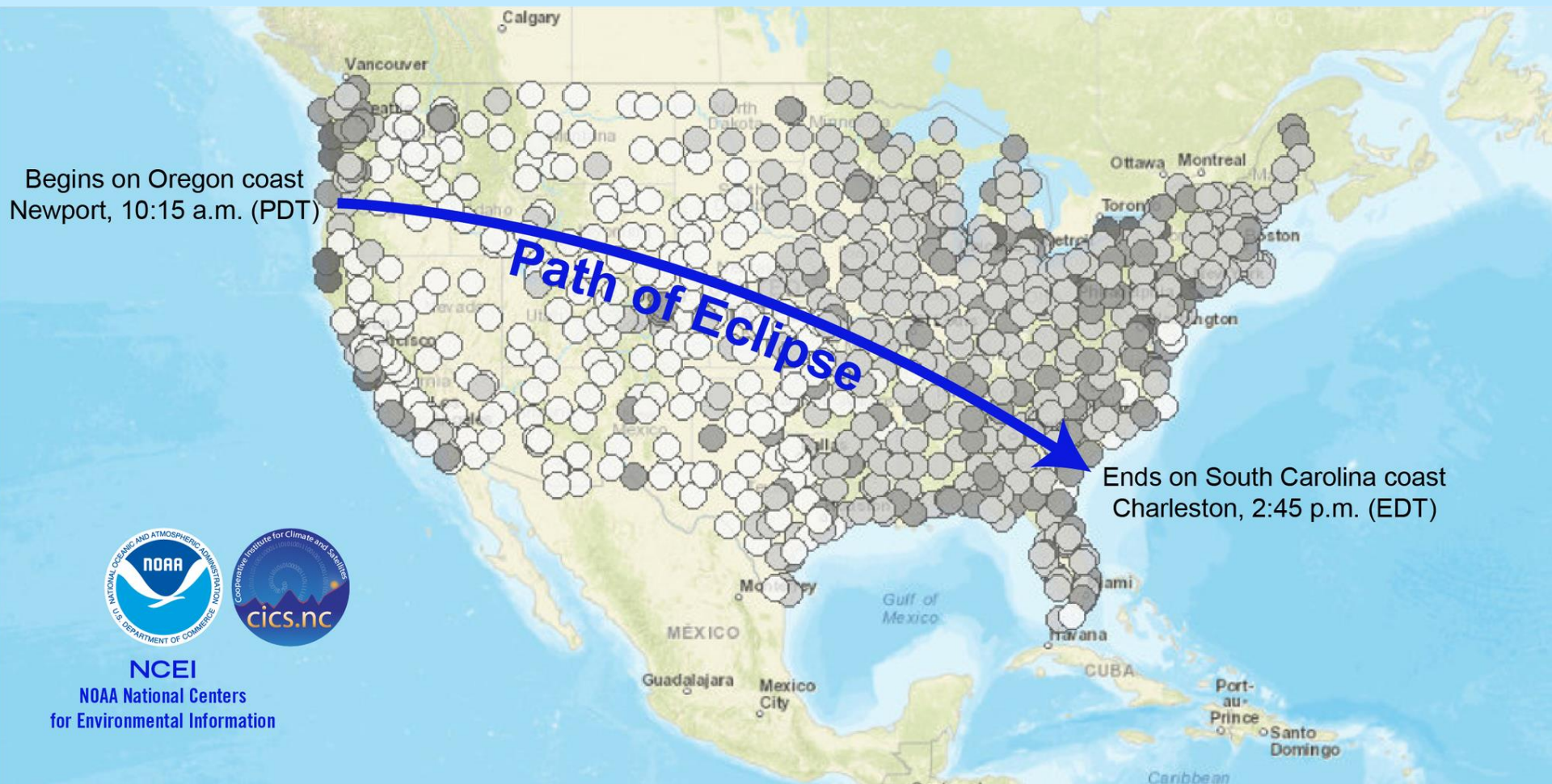
Total Solar Eclipse

August 21, 2017



Location, Location, Location

Average Historical Cloudiness for August 21



<https://eclipse2017.nasa.gov/eclipse-maps>

Live Total Solar Eclipse Webcasts from Exploratorium – In English and Spanish

www.exploratorium.edu/eclipse

9:00 a.m.–12:15 p.m. PDT.



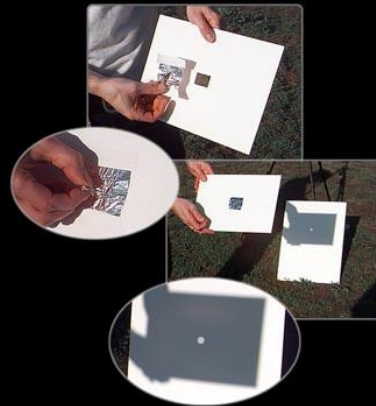
**Watch the 2016–2017
eclipse videos
on our free
Android and iOS apps.**





Partial Eclipse (Use filter) Total Eclipse (No filter) Partial Eclipse (Use filter)

*A total solar eclipse is about as bright as the full Moon — and just as safe to look at.
But the Sun at any other time is dangerously bright; view it only through special-purpose safe solar filters.*

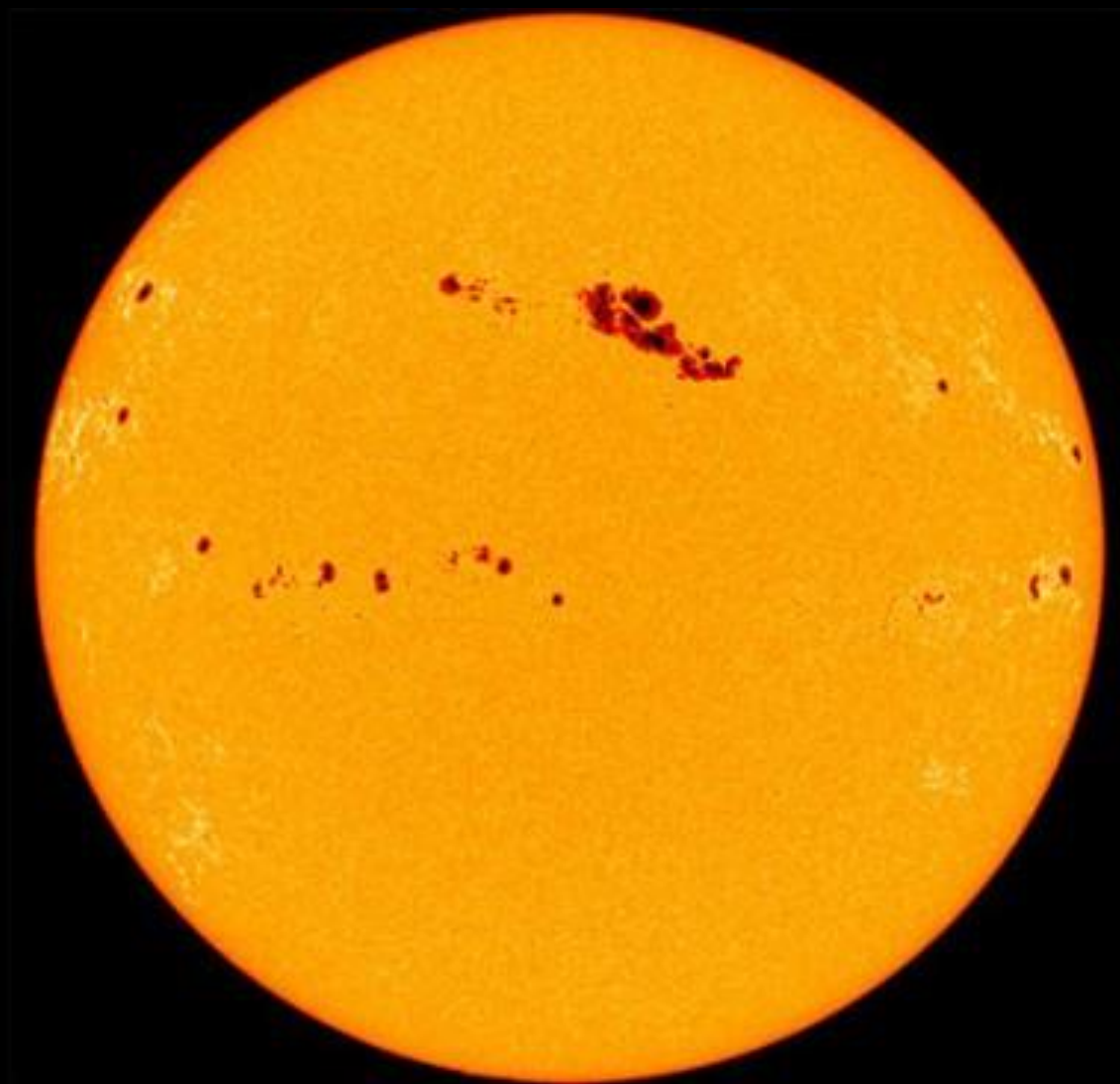


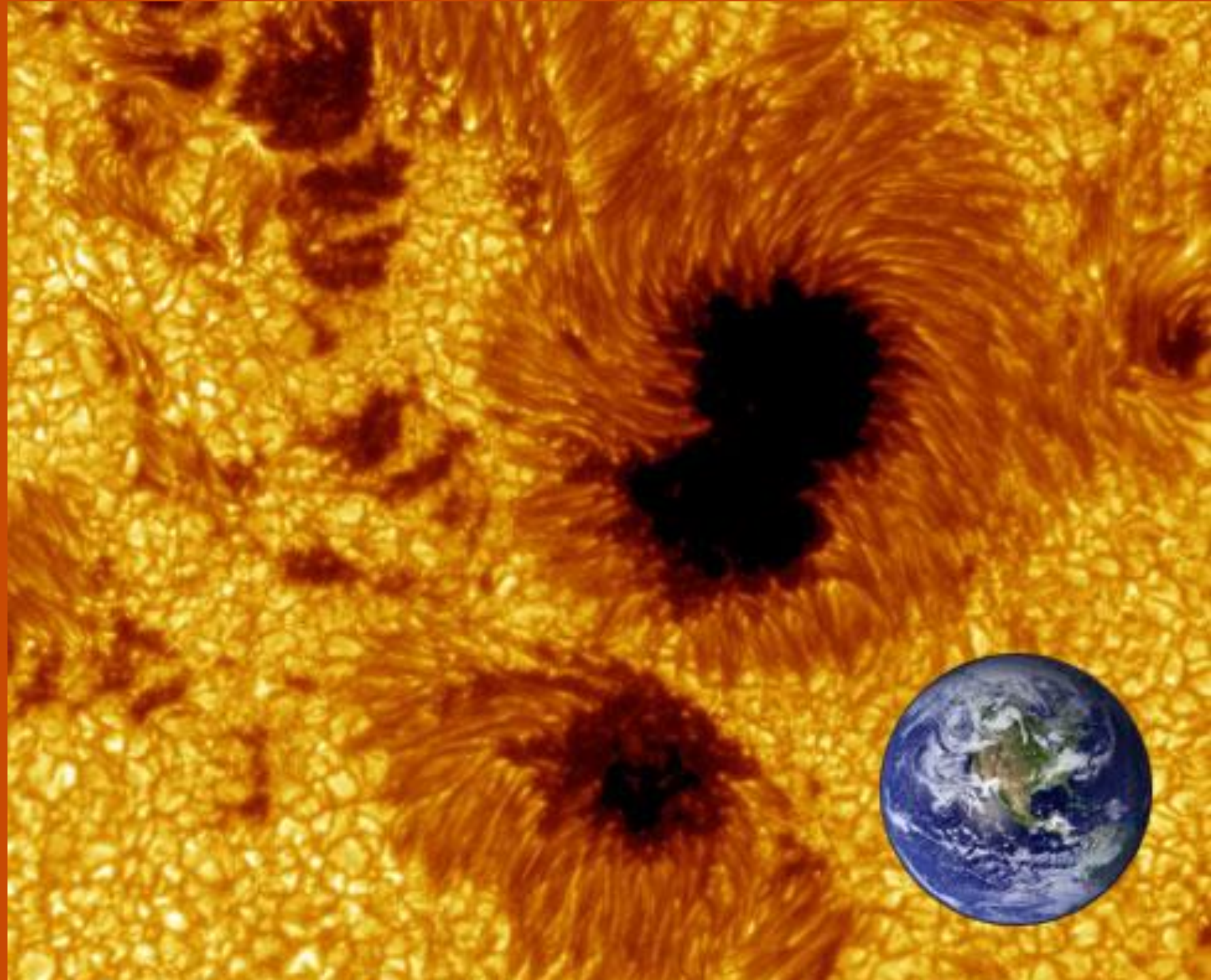
<https://www.exploratorium.edu/eclipse/how-to-view-eclipse>





















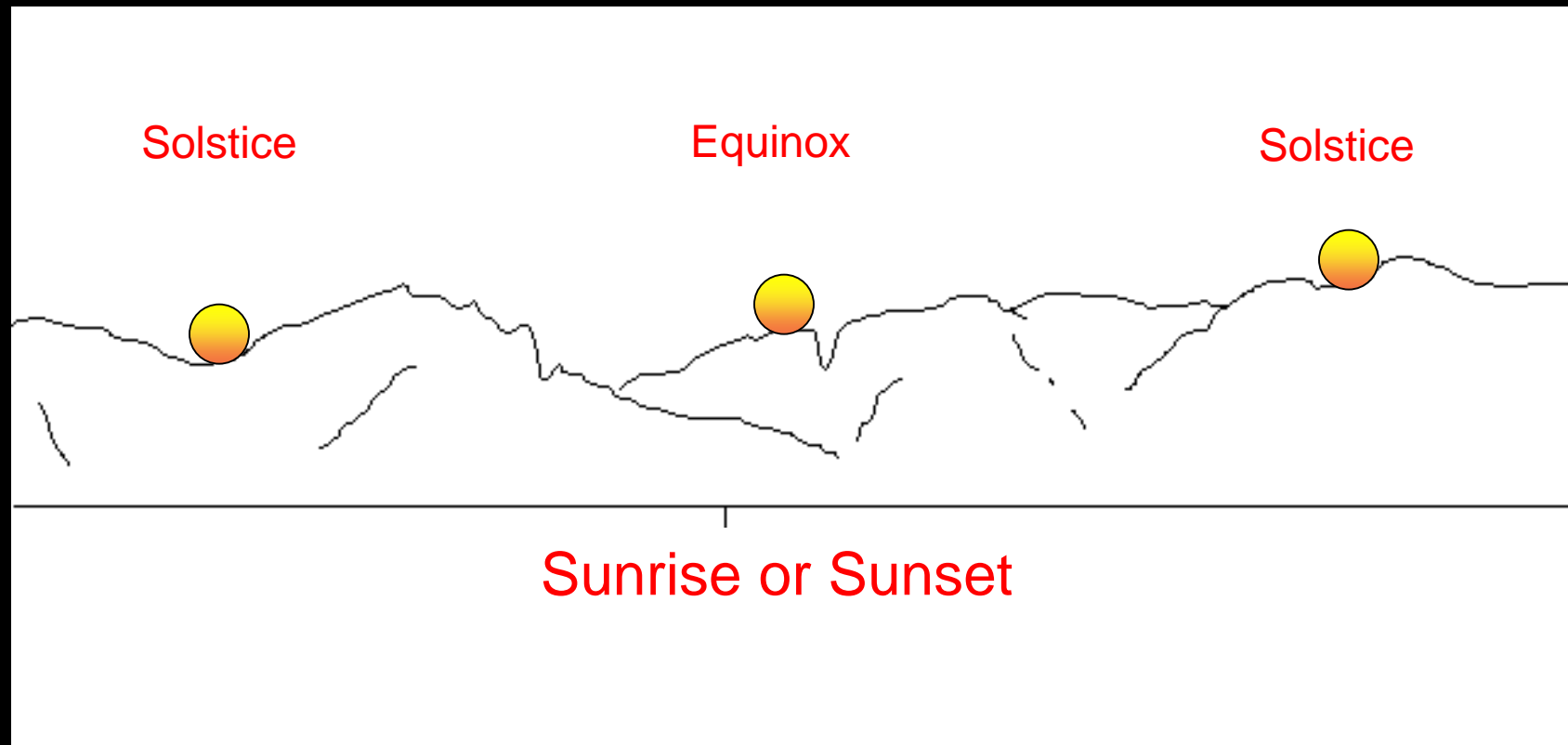


Four planets during the eclipse: Jupiter, Mercury, Mars, and Venus





Observing the Sun in the Horizon



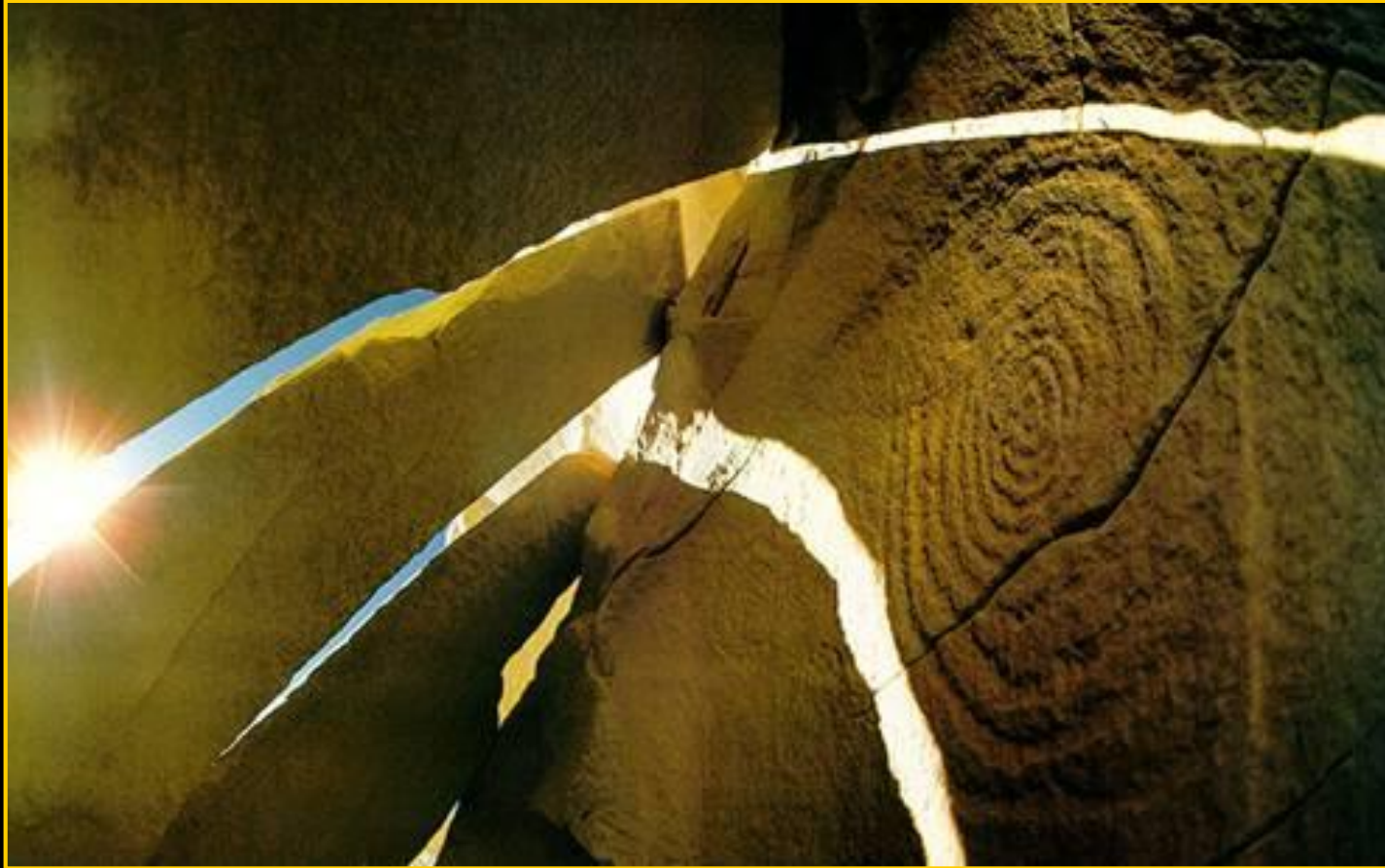


Fajada Butte – Chaco Canyon

Solstice



Fajada – Chaco Canyon



Equinox











**Maya
Calendar**

Xóok K'in – Agriculture – Seasons















Maya codex contains a table that predicts both solar and lunar eclipses





Reminders

- You will be redirected to a SurveyMonkey link after the webinar ends. Complete the survey and you will be given the link for a Certificate of Attendance
- August 2nd – “Safe Eclipse Viewing” with Doug Duncan
- September 13th – “Out of This World Activities”
 - Registration opens early August
- All webinars are recorded and archived on <http://www.starnetlibraries.org/resources/webinars/>
- Eclipse glasses are on their way!

Thank You!