

February 1, 2017

Hi !



Apply to Become a NASA@ My Library Partner!

Engage public audiences nationwide in informal and lifelong learning with the excitement of NASA exploration and discovery through new NASA@ My Library resources!

Applications will be accepted from **Feb. 1 to March 22, 2017**. To view the project guidelines and apply online, visit <https://apply.ala.org/nasalibraries>. The American Library Association (ALA) Public Programs Office invites ALA members and nonmembers to apply; membership status will have no impact on your application.

STAR_Net is supporting NASA's celebrations of Women's History Month this March

Help your community explore the wonders of NASA science and celebrate the contribution of women to STEM! Libraries will have the opportunity to host events related to NASA's scientific explorations of the universe during *Women's History Month* using [curated resources](#). These types of events are open to all family members, regardless of gender, but focus on engaging girls in science using field-tested, [hands-on activities](#).

[Register to participate](#) in the *Girls STEAM Ahead with NASA* project by February 21!

Join NASA in Celebrating Earth Day!

Host an Earth Day event to observe clouds using the [GLOBE Observer app](#) on April 22, 2017. Participating libraries will receive a FREE packet of Earth Day programming materials (on a first-come, first-served basis).

[Register now!](#)

Webinar Series


NASA@ My Library

Pre-Application Webinar

Date: Wednesday, February 8th, 2017
Time: 3 pm ET/2 pm CT/1 pm MT/12 pm PT
Presenters: Keliann LaConte & Anne Holland

Join the STAR_Net team for information about the NASA@ My Library project and answer questions about the [application process](#).

[Register Now!](#)
(password is "star")



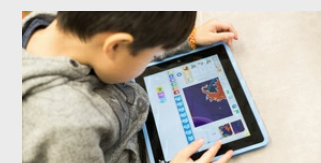
Girls STEAM Ahead with NASA

Date: Wednesday, February 15th, 2017
Time: 3 pm ET/2 pm CT/1 pm MT/12 pm PT
Presenters: Kim Arcand and Bonnie Meinke

NASA's Universe of Learning astronomy education program will introduce *Girls STEAM Ahead with NASA*, discuss how to build girl-engagement into your programming, and demonstrate hands-on coding activity that uses real astronomical observations in the ways real astronomers do. Learn about exhibits and activities, as well as posters inspired by the women depicted in new film *Hidden Figures*!

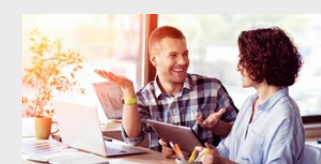
[Register Now!](#)
(password is "star")

Latest Blogs



Scratch Jr. Code Camp

Skokie Public Library experiments with offering 3-day camps with STEAM topics. [Read blog >>](#)



Digital Learning Day

At the Fayetteville Free Library (FFL), digital resources are a priority. [Read blog >>](#)

[View All Blogs](#)

Programming Opportunities

Engineers Week
Feb. 19-25, 2017

Women's History Month
March, 2017
[Sign up >>](#)

Earth Day
Apr. 22, 2017
[Sign up >>](#)

Build A Better World
Summer, 2017

2017 Solar Eclipse
Aug. 21, 2017

Day of Saturn
Sept. 15, 2017

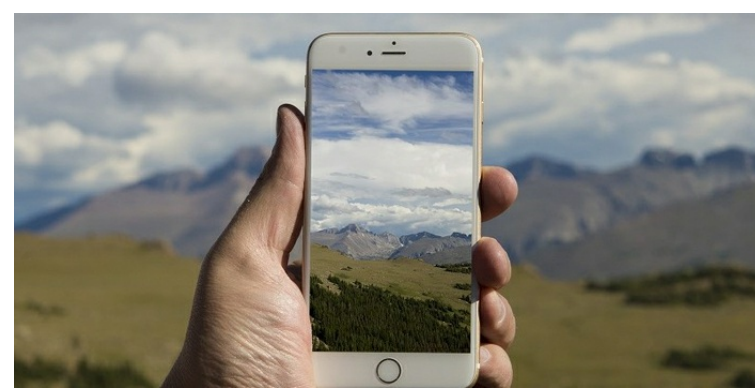
Int'l Observe the Moon Night
Oct. 28, 2017

[View All Events](#)

Follow Us!

Click any of the icons below to follow us on Facebook, Twitter, and Pinterest.





Celebrate Earth Day with NASA's GLOBE Observer

Date: Wednesday, March 8th, 2017
Time: 3 pm ET/2 pm CT/1 pm MT/12 pm PT
Presenters: Jessica Taylor, Sarah McCrea and Dorian Janney

Join a NASA scientist and educators to learn:

- Why observing clouds and sky conditions is important to NASA
- How [NASA's GLOBE Observer](#) citizen science observations contribute to NASA science
- How to do sky observations with the easy-to-use [GLOBE Observer app](#): identify satellite overpass times, photograph clouds, record sky observations and compare them with NASA satellite images
- What resources are available to support library programming on Earth Day 2017 and beyond

[Register Now!](#)

(password is "star")

Miss Past Webinars? Get Them Here!



Hands-on STEM: Binary Weaving

Celebrate the contributions of women to science, technology, and exploration with a hands-on activities and NASA resources!

Try making "binary bracelets" with your initials by threading two colors of pony beads in patterns that represent letters. Find examples of how to convert letters into binary through a [detailed instruction sheet](#). Check out the excellent tips on using this activity in a program at [STEM in Libraries!](#) Download NASA's [Modern Figures Toolkit](#) for videos and historical information about the "human computers" who helped NASA explore the Moon.



The STAR Library Education Network (*STAR_Net*) is a hands-on learning network for libraries and their communities across the country. *STAR_Net* focuses on helping library professionals build their STEM skills by providing "science-technology activities and resources" (STAR) and training to use those resources. Plus, engage public audiences nationwide in informal and lifelong learning with the excitement of exploration and discovery through new NASA@ My Library resources!

STAR_Net is built upon a strong network of collaborators and partners, led by the Space Science Institute's (SSI) National Center for Interactive Learning (NCIL). Partners include the American Library Association's Public Programs Office, Lunar and Planetary Institute, Afterschool Alliance, Education Development Center, Datum Advisors, Cornerstones of Science, and the Pacific Science Center. Major funding is provided by the National Science Foundation, NASA Science Mission Directorate, the Gordon and Betty Moore Foundation, and the Institute of Museum and Library Services.

Share this email:



[Manage](#) your preferences | [Opt out](#) using TrueRemove™
Got this as a forward? [Sign up](#) to receive our future emails.
View this email [online](#).

4750 Walnut Street Suite 205
Boulder, CO | 80301 US

This email was sent to .
To continue receiving our emails, add us to your address book.

